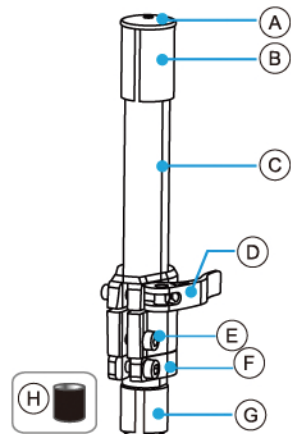


Parts Breakdown



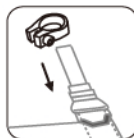
- A. Top cap
 B. Stem clamping area
 C. Stanchion
 D. Quick release lever
 E. Fixing bolt of the ring
 F. Head set tightening ring
 G. 25.4mm sleeve(white)
 H. 24.4mm sleeve(black)

Instructions

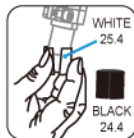
! Remove the current stem and get ready for assembly with EASY-UP LITE.



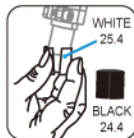
- 1.** Push down the original star nut of the steerer tube to bottom.



- 2-1.** Measure the length of the stanchion is 35.2mm or not. If not, use the spacer.



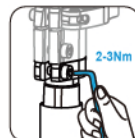
- 2-2.** Head set tightening ring insert to stanchion.



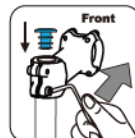
- 3.** Check the size of the stanchion's inner tube, change to the suitable inner tube sleeve.



- 4.** Place EASY-UP LITE onto the steerer tube and make sure the clamping bolts are facing backwards(towards seat). Tighten the bolts with torque 9-10Nm.



- 5.** Adjust the fixing bolts to make sure the head set is fixed. (recommend the torque 2-3Nm)



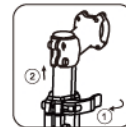
- 6.** Place back the stem and top cap.

How To Use

TO Fold

1-1.

Open the lever and pull the stem upwards.



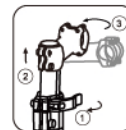
1-2.

Turn the stem 90 degrees to the right and slide it down to the bottom. Tighten and close the lever.



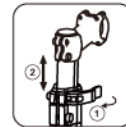
1-3.

Loosen the lever and pull the stem upwards then turn 90° to the left(facing forward).



Height Adjustment

Adjust height by moving stem up or down. Tighten the nut and securely close the lever. Be sure the lever is tightened before riding.



satori

EASY-UP LITE

USER'S MANUAL

